

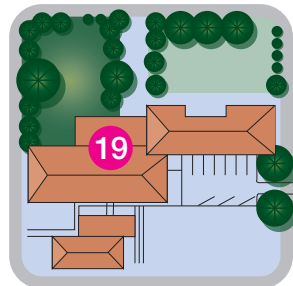
# SITE MAP



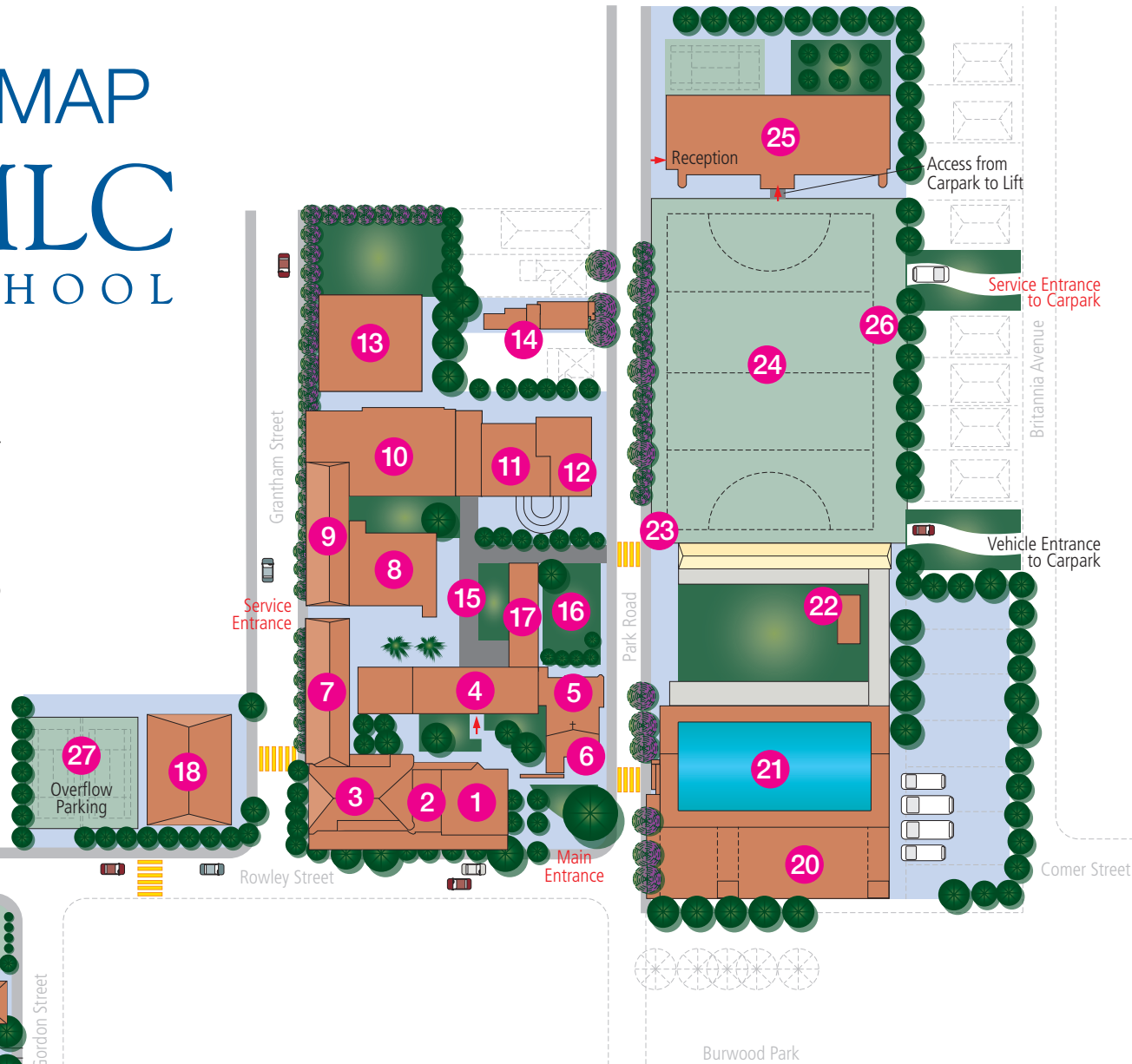
# MLC SCHOOL

**STREET ADDRESS:**  
MLC School  
Rowley Street,  
Burwood NSW 2134

**POSTAL ADDRESS:**  
MLC School  
PO Box 643  
Burwood NSW 1805



For Archdale, please proceed to Kent House (no. 19)



## LEGEND

1. Drama Theatre, Design and Technology
2. Clothing Shop
3. **GROUND FLOOR**  
Admissions, Community Relations, Counsellors
- FIRST FLOOR**  
Potts Hall
4. **GROUND FLOOR**  
Senior School Reception, Administration,  
Principal's Office and Nurse
- FIRST FLOOR**  
Visual Arts, Staff Study
5. Sutherland Rooms, Schofield Tower – Staff Rooms
6. Chapel
7. **GROUND FLOOR** **FIRST FLOOR**  
Hospitality History
8. Independent Learning Centre and Library
- THIRD FLOOR**  
Ailsa Butcher Room
9. **GROUND FLOOR**  
TAS, Language Lab
- FIRST FLOOR**  
Science Lab, Dance Studio
10. **GROUND FLOOR**  
Enlightenment Centre
- FIRST FLOOR**  
Science Laboratories
11. **GROUND FLOOR** **FIRST FLOOR**  
English Maths
12. **LOWER GROUND FLOOR** **GROUND FLOOR**  
Canteen Classrooms
- FIRST FLOOR** **SECOND FLOOR**  
Social Science Tower Viewing Area
13. Middle School – Year 6 Centre
14. Speech and Drama
15. Covered Walkways
16. Principal's Lawn
17. **GROUND FLOOR** **FIRST FLOOR**  
Staff Common Room Staff Study
18. Centenary Music Centre
19. Kent House Visual Arts Centre and Gallery
20. Gymnasium and Sports Department
21. Aquatic Centre
22. Field Classrooms
23. Pedestrian Entrance to Underground Carpark
24. Hockey Field
25. Junior School **THIRD FLOOR**  
Daphne Line Hall
26. Sprint Track
27. Tennis Courts

This is current information at December, 2012.